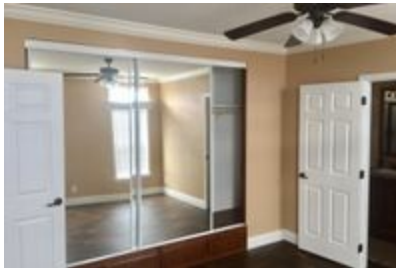




Home & Land Package



Home & Land Package Model number: 406 CTC
2 beds • 2 baths • 960 sq.ft. • 16' width • 60' depth

Our home building facilities invest in continuous product and process improvements. Plans, dimensions, features, materials, specifications and availability are subject to change without notice or obligation. Renderings and floor plans are representative likenesses of our homes and may differ from the actual homes. We invite you to tour a Home Center near you and inspect the highest value in quality housing available or call (956) 464-3379 to speak with a Home Consultant. Copyright 2017, CMH. All rights reserved.

<https://www.claytonhomesdonna.com>

CLAYTON HOMES-DONNA

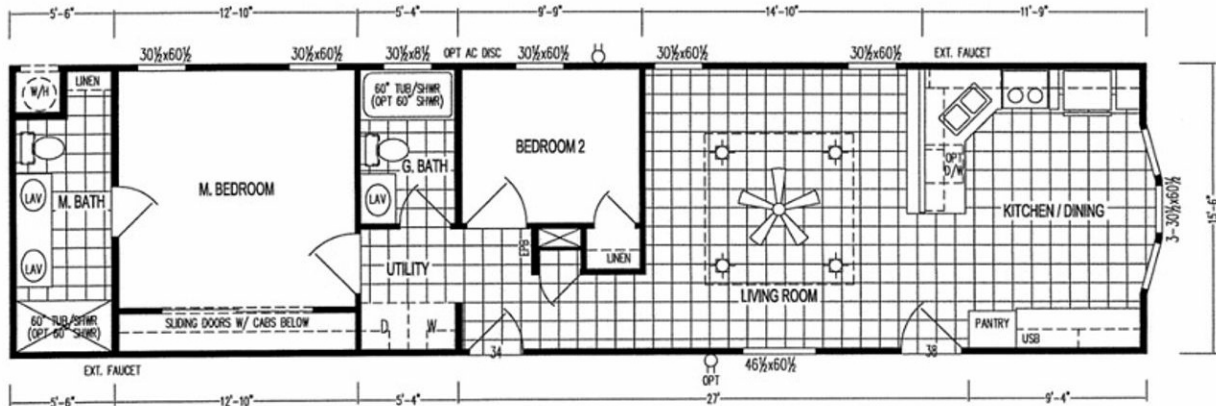
3201 E EXPRESSWAY 83
DONNA, TX 78537

Monday - Thursday: 9am - 7pm
Friday: 9am - 6pm
Saturday: 9am - 5pm
Sunday: Closed

(956) 464-3379



Home & Land Package



Home & Land Package Model number: 406 CTC

2 beds • 2 baths • 960 sq.ft. • 16' width • 60' depth

Our home building facilities invest in continuous product and process improvements. Plans, dimensions, features, materials, specifications and availability are subject to change without notice or obligation. Renderings and floor plans are representative likenesses of our homes and may differ from the actual homes. We invite you to tour a Home Center near you and inspect the highest value in quality housing available or call (956) 464-3379 to speak with a Home Consultant. Copyright 2017, CMH. All rights reserved.

<https://www.claytonhomesdonna.com>

CLAYTON HOMES-DONNA

3201 E EXPRESSWAY 83
DONNA, TX 78537

Monday - Thursday: 9am - 7pm
Friday: 9am - 6pm
Saturday: 9am - 5pm
Sunday: Closed

(956) 464-3379